

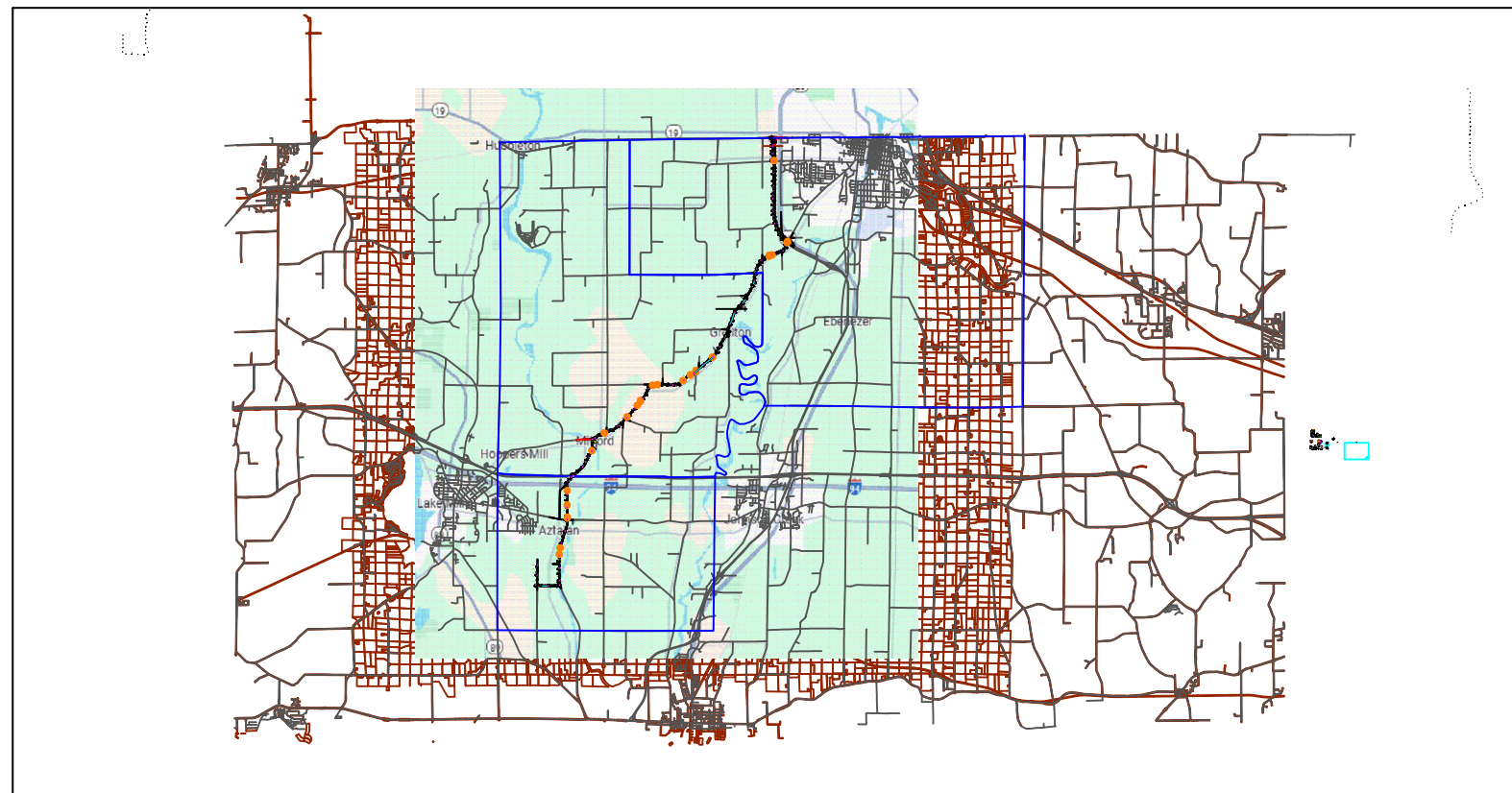


MIDWEST FIBER NETWORKS

MWFN BDW GREEN ROUTE

2507025

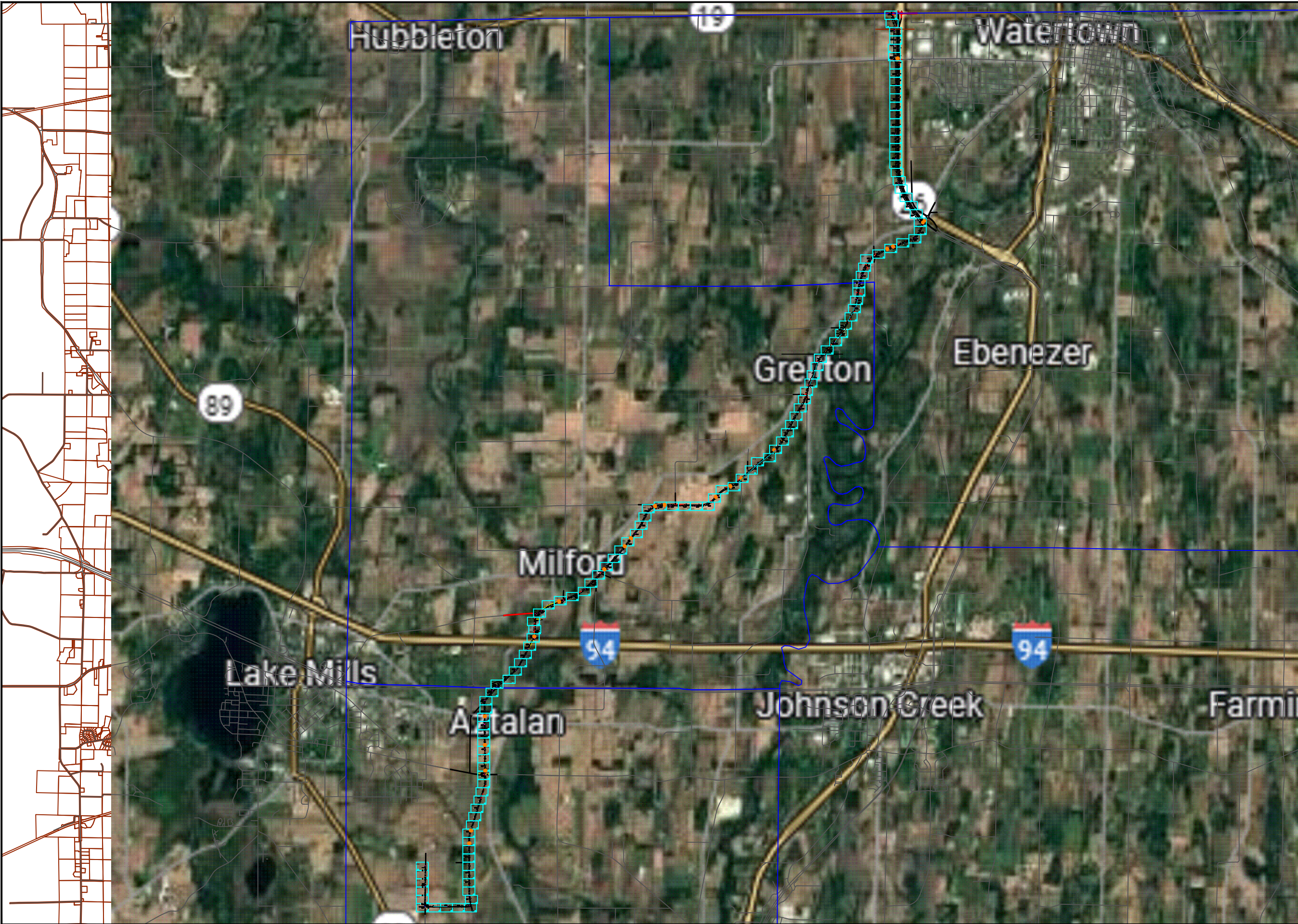
TOWNS OF WATERTOWN, MILFORD AND AZTALAN  
JEFFERSON COUNTY, WISCONSIN  
OCTOBER 2025



LOCATION MAP  
NOT TO SCALE

PAGE NAME	PAGE #
COVER	COVER
OVERVIEW	1
BILL OF MATERIALS	2
LEGEND	3
CONSTRUCTION SPECIFICATION	4-5
INSTALLATION GUIDELINES	6
TWO HH TYPICAL	7
OSP PLANS	8-134





**ATTENTION - CONSTRUCTION CONTRACTORS**

- IMPORTANT NOTICE: MICRODUCT CABLES ARE MORE EASILY DAMAGED THAN STANDARD OSP CABLES. TO PREVENT DAMAGE AND DELAYS:**
- DO NOT KINK, CRUSH, SHARPLY BEND, OR OVALIZE DUCT IN ANY WAY
  - DO NOT LEAVE DUCT ENDS UNSEALED AGAINST DIRT AND WATER
  - DO NOT USE DUCT THAT WON'T HOLD PRESSURE OR IS NOT COMPLETELY CLEAN
  - DO NOT STEP ON THE CABLE
  - DO NOT KINK OR SHARPLY BEND THE CABLE
  - DO NOT PULL THE CABLE USING STANDARD PULLING OPERATIONS
  - DO NOT EXCEED THE PUSH FORCE LIMITS ESTABLISHED WITH THE CRASH TEST

CONTRACTOR MUST COMPLY WITH ALL CONSTRUCTION NOTES ON PAGE 4, IN ADDITION TO THE NOTES AND DIRECTIONS ON ALL DETAIL PAGES.

CONTRACTOR TO FOLLOW INCLUDED AS-BUILT GUIDELINES, UNLESS OTHERWISE SPECIFIED IN WRITING IN THE SOW.

LOCATIONS OF UNDERGROUND STRUCTURES OR FACILITIES SHOWN ON THESE PLANS ARE BASED ON AVAILABLE RECORDS AT THE TIME OF PREPARATION AND ARE NOT GUARANTEED TO BE COMPLETE OR CORRECT. THE CONTRACTOR MUST CONTACT ALL UTILITIES AT LEAST 72 HOURS PRIOR TO CONSTRUCTION TO DETERMINE EXACT LOCATION OF ALL FACILITIES.  
FOR ALL LOCAL UTILITY ONE CALL CENTERS CONTACT:



PRIVATE UTILITIES MAY BE PRESENT. CONSTRUCTION CONTRACTOR IS RESPONSIBLE FOR IDENTIFYING PRIVATE UTILITIES PRIOR TO EXCAVATION.

CONSTRUCTION CONTRACTOR IS RESPONSIBLE FOR DETERMINING AND VERIFYING THE EXACT LOCATION OF ALL UTILITIES WITHIN THE SCOPE OF WORK. COMPLETE REPAIR AND RESTORATION OF ANY AND ALL DAMAGES INCURRED SHALL BE AT THE EXPENSE OF THE CONSTRUCTION CONTRACTOR.



**MIDWEST FIBER NETWORKS**

414.672.5612  
6070 N FLINT RD  
GLENDALE, WI 53209

DIRECTOR OF ENGINEERING: SANDRA FALATYK

EMERGENCY NOTIFICATION NUMBER: 1-866-831-1661

**PRELIMINARY**

**2507025**  
Project# BDW GREEN ROUTE

MUNICIPALITY:	
COUNTY: JEFFERSON	STATE: WI
TOWN RANGE SEC:	
DATE : 10/09/2025	
DRAWN BY : IMMCO	
DRAWING SCALE : 1"=50'	

REVISIONS			
REV. NO.	DESCRIPTION	BY	DATE

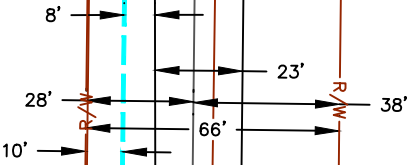


008



PROPOSED (2) 30"x48"x36" HAND HOLE WITH PRE-DRILLED MOUSEHOLE(S) ON A 6" GRAVEL BASE. INSTALL LOCATE BRACKET. LEAVE 150' STORAGE LOOP ON THE FIBER. CAP/PLUG ALL UNUSED CONDUITS.

SEE SHEET:09



ATTENTION - CONSTRUCTION CONTRACTORS

- IMPORTANT NOTICE: MICRODUCT CABLES ARE MORE EASILY DAMAGED THAN STANDARD OSP CABLES.
- TO PREVENT DAMAGE AND DELAYS:
- DO NOT KINK, CRUSH, SHARPLY BEND, OR OVALIZE DUCT IN ANY WAY
  - DO NOT LEAVE DUCT ENDS UNSEALED AGAINST DIRT AND WATER
  - DO NOT USE DUCT THAT WON'T HOLD PRESSURE OR IS NOT COMPLETELY CLEAN
  - DO NOT STEP ON THE CABLE
  - DO NOT KINK OR SHARPLY BEND THE CABLE
  - DO NOT PULL THE CABLE USING STANDARD PULLING OPERATIONS
  - DO NOT EXCEED THE PUSH FORCE LIMITS ESTABLISHED WITH THE CRASH TEST

CONTRACTOR MUST COMPLY WITH ALL CONSTRUCTION NOTES ON PAGE 4, IN ADDITION TO THE NOTES AND DIRECTIONS ON ALL DETAIL PAGES.

CONTRACTOR TO FOLLOW INCLUDED AS-BUILT GUIDELINES, UNLESS OTHERWISE SPECIFIED IN WRITING IN THE SOW.

LOCATIONS OF UNDERGROUND STRUCTURES OR FACILITIES SHOWN ON THESE PLANS ARE BASED ON AVAILABLE RECORDS AT THE TIME OF PREPARATION AND ARE NOT GUARANTEED TO BE COMPLETE OR CORRECT. THE CONTRACTOR MUST CONTACT ALL UTILITIES AT LEAST 72 HOURS PRIOR TO CONSTRUCTION TO DETERMINE EXACT LOCATION OF ALL FACILITIES.

FOR ALL LOCAL UTILITY ONE CALL CENTERS CONTACT:



PRIVATE UTILITIES MAY BE PRESENT. CONSTRUCTION CONTRACTOR IS RESPONSIBLE FOR IDENTIFYING PRIVATE UTILITIES PRIOR TO EXCAVATION.

CONSTRUCTION CONTRACTOR IS RESPONSIBLE FOR DETERMINING AND VERIFYING THE EXACT LOCATION OF ALL UTILITIES WITHIN THE SCOPE OF WORK. COMPLETE REPAIR AND RESTORATION OF ANY AND ALL DAMAGES INCURRED SHALL BE AT THE EXPENSE OF THE CONSTRUCTION CONTRACTOR.



MIDWEST FIBER NETWORKS

414.672.5612  
6070 N FLINT RD  
GLENDALE, WI 53209

DIRECTOR OF  
ENGINEERING: SANDRA FALATYK  
EMERGENCY  
NOTIFICATION  
NUMBER: 1-866-831-1661

PRELIMINARY

2507025  
Project# BDW GREEN ROUTE

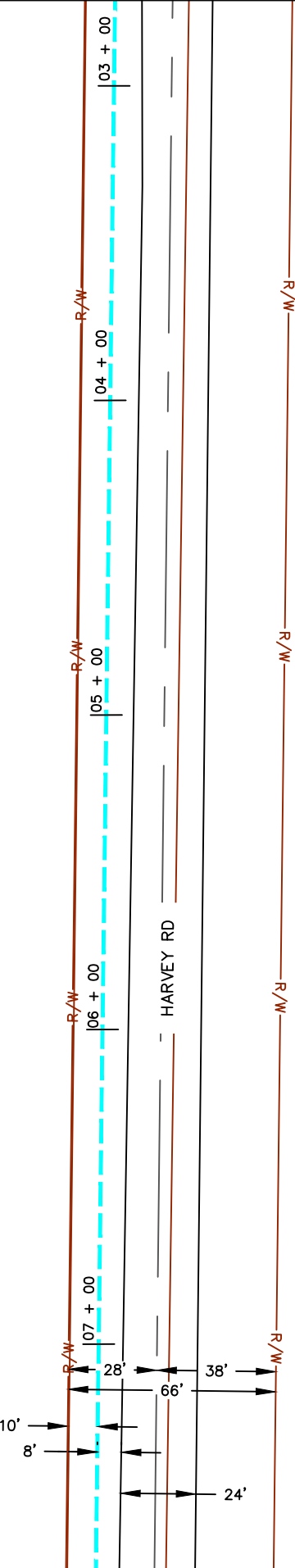
MUNICIPALITY: AZTALAN	
COUNTY: JEFFERSON	STATE: WI
TOWN RANGE SEC: T7N R14E Sec. 19	
DATE: 10/09/2025	
DRAWN BY: IMMCO	
DRAWING SCALE: 1"=50'	

REVISIONS			
REV. NO.	DESCRIPTION	BY	DATE

0009

SEE SHEET:08

SEE SHEET:10



ATTENTION - CONSTRUCTION CONTRACTORS

- IMPORTANT NOTICE: MICRODUCT CABLES ARE MORE EASILY DAMAGED THAN STANDARD OSP CABLES. TO PREVENT DAMAGE AND DELAYS:
- DO NOT KINK, CRUSH, SHARPLY BEND, OR OVALIZE DUCT IN ANY WAY
  - DO NOT LEAVE DUCT ENDS UNSEALED AGAINST DIRT AND WATER
  - DO NOT USE DUCT THAT WON'T HOLD PRESSURE OR IS NOT COMPLETELY CLEAN
  - DO NOT STEP ON THE CABLE
  - DO NOT KINK OR SHARPLY BEND THE CABLE
  - DO NOT PULL THE CABLE USING STANDARD PULLING OPERATIONS
  - DO NOT EXCEED THE PUSH FORCE LIMITS ESTABLISHED WITH THE CRASH TEST

CONTRACTOR MUST COMPLY WITH ALL CONSTRUCTION NOTES ON PAGE 4, IN ADDITION TO THE NOTES AND DIRECTIONS ON ALL DETAIL PAGES.

CONTRACTOR TO FOLLOW INCLUDED AS-BUILT GUIDELINES, UNLESS OTHERWISE SPECIFIED IN WRITING IN THE SOW.

LOCATIONS OF UNDERGROUND STRUCTURES OR FACILITIES SHOWN ON THESE PLANS ARE BASED ON AVAILABLE RECORDS AT THE TIME OF PREPARATION AND ARE NOT GUARANTEED TO BE COMPLETE OR CORRECT. THE CONTRACTOR MUST CONTACT ALL UTILITIES AT LEAST 72 HOURS PRIOR TO CONSTRUCTION TO DETERMINE EXACT LOCATION OF ALL FACILITIES.

FOR ALL LOCAL UTILITY ONE CALL CENTERS CONTACT:



PRIVATE UTILITIES MAY BE PRESENT. CONSTRUCTION CONTRACTOR IS RESPONSIBLE FOR IDENTIFYING PRIVATE UTILITIES PRIOR TO EXCAVATION.

CONSTRUCTION CONTRACTOR IS RESPONSIBLE FOR DETERMINING AND VERIFYING THE EXACT LOCATION OF ALL UTILITIES WITHIN THE SCOPE OF WORK. COMPLETE REPAIR AND RESTORATION OF ANY AND ALL DAMAGES INCURRED SHALL BE AT THE EXPENSE OF THE CONSTRUCTION CONTRACTOR.



MIDWEST FIBER NETWORKS

414.672.5612  
6070 N FLINT RD  
GLENDALE, WI 53209

DIRECTOR OF ENGINEERING: SANDRA FALATYK

EMERGENCY NOTIFICATION NUMBER: 1-866-831-1661

PRELIMINARY

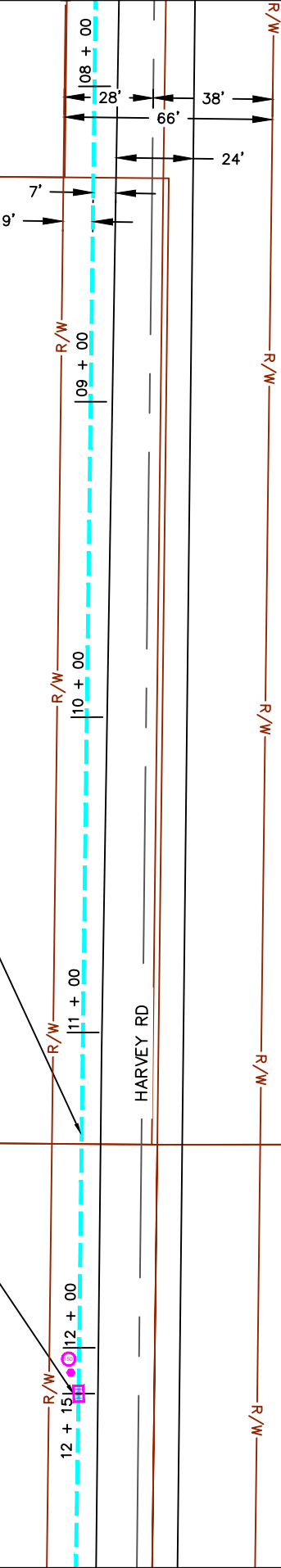
2507025  
Project# BDW GREEN ROUTE

MUNICIPALITY: AZTALAN	
COUNTY: JEFFERSON	STATE: WI
TOWN RANGE SEC: T7N R14E Sec. 19	
DATE : 10/09/2025	
DRAWN BY : IMMCO	
DRAWING SCALE : 1"=50'	

REVISIONS			
REV. NO.	DESCRIPTION	BY	DATE

010

SEE SHEET:09



PROPOSED (1) 4-WAY 22/16 MICRODUCT AND (2) 1.25" HDPE DUCTS AND (FOR MWFN) PROPOSED (1) 1.25" HDPE DUCTS WITH #8 SOLID WIRE 1215' FROM HH TO HH. MAINTAIN DEPTH OF 36 - 48". INSTALL 864CT SIROCCO MICROFIBER IN THE MICRODUCT RED CONDUIT.

PROPOSED (2) 30"X48"X36" HAND HOLE WITH PRE-DRILLED MOUSEHOLE(S) ON A 6" GRAVEL BASE. INSTALL LOCATE BRACKET. LEAVE 150' STORAGE LOOP ON THE FIBER. CAP/PLUG ALL UNUSED CONDUITS.

SEE SHEET:11

ATTENTION - CONSTRUCTION CONTRACTORS

- IMPORTANT NOTICE: MICRODUCT CABLES ARE MORE EASILY DAMAGED THAN STANDARD OSP CABLES. TO PREVENT DAMAGE AND DELAYS:
- DO NOT KINK, CRUSH, SHARPLY BEND, OR OVALIZE DUCT IN ANY WAY
  - DO NOT LEAVE DUCT ENDS UNSEALED AGAINST DIRT AND WATER
  - DO NOT USE DUCT THAT WON'T HOLD PRESSURE OR IS NOT COMPLETELY CLEAN
  - DO NOT STEP ON THE CABLE
  - DO NOT KINK OR SHARPLY BEND THE CABLE
  - DO NOT PULL THE CABLE USING STANDARD PULLING OPERATIONS
  - DO NOT EXCEED THE PUSH FORCE LIMITS ESTABLISHED WITH THE CRASH TEST

CONTRACTOR MUST COMPLY WITH ALL CONSTRUCTION NOTES ON PAGE 4, IN ADDITION TO THE NOTES AND DIRECTIONS ON ALL DETAIL PAGES.

CONTRACTOR TO FOLLOW INCLUDED AS-BUILT GUIDELINES, UNLESS OTHERWISE SPECIFIED IN WRITING IN THE SOW.

LOCATIONS OF UNDERGROUND STRUCTURES OR FACILITIES SHOWN ON THESE PLANS ARE BASED ON AVAILABLE RECORDS AT THE TIME OF PREPARATION AND ARE NOT GUARANTEED TO BE COMPLETE OR CORRECT. THE CONTRACTOR MUST CONTACT ALL UTILITIES AT LEAST 72 HOURS PRIOR TO CONSTRUCTION TO DETERMINE EXACT LOCATION OF ALL FACILITIES.

FOR ALL LOCAL UTILITY ONE CALL CENTERS CONTACT:



PRIVATE UTILITIES MAY BE PRESENT. CONSTRUCTION CONTRACTOR IS RESPONSIBLE FOR IDENTIFYING PRIVATE UTILITIES PRIOR TO EXCAVATION.

CONSTRUCTION CONTRACTOR IS RESPONSIBLE FOR DETERMINING AND VERIFYING THE EXACT LOCATION OF ALL UTILITIES WITHIN THE SCOPE OF WORK. COMPLETE REPAIR AND RESTORATION OF ANY AND ALL DAMAGES INCURRED SHALL BE AT THE EXPENSE OF THE CONSTRUCTION CONTRACTOR.



MIDWEST FIBER NETWORKS

414.672.5612  
6070 N FLINT RD  
GLENDALE, WI 53209

DIRECTOR OF  
ENGINEERING: SANDRA FALATYK

EMERGENCY  
NOTIFICATION  
NUMBER: 1-866-831-1661

PRELIMINARY

2507025

Project# BDW GREEN ROUTE

MUNICIPALITY: AZTALAN

COUNTY: JEFFERSON STATE: WI

TOWN RANGE SEC: T7N R14E Sec. 19

DATE : 10/09/2025

DRAWN BY : IMMCO

DRAWING SCALE : 1"=50'

REVISIONS			
REV. NO.	DESCRIPTION	BY	DATE

011

SEE SHEET:10

SEE SHEET:12



ATTENTION - CONSTRUCTION CONTRACTORS

- IMPORTANT NOTICE: MICRODUCT CABLES ARE MORE EASILY DAMAGED THAN STANDARD OSP CABLES. TO PREVENT DAMAGE AND DELAYS:
- DO NOT KINK, CRUSH, SHARPLY BEND, OR OVALIZE DUCT IN ANY WAY
  - DO NOT LEAVE DUCT ENDS UNSEALED AGAINST DIRT AND WATER
  - DO NOT USE DUCT THAT WON'T HOLD PRESSURE OR IS NOT COMPLETELY CLEAN
  - DO NOT STEP ON THE CABLE
  - DO NOT KINK OR SHARPLY BEND THE CABLE
  - DO NOT PULL THE CABLE USING STANDARD PULLING OPERATIONS
  - DO NOT EXCEED THE PUSH FORCE LIMITS ESTABLISHED WITH THE CRASH TEST

CONTRACTOR MUST COMPLY WITH ALL CONSTRUCTION NOTES ON PAGE 4, IN ADDITION TO THE NOTES AND DIRECTIONS ON ALL DETAIL PAGES.

CONTRACTOR TO FOLLOW INCLUDED AS-BUILT GUIDELINES, UNLESS OTHERWISE SPECIFIED IN WRITING IN THE SOW.

LOCATIONS OF UNDERGROUND STRUCTURES OR FACILITIES SHOWN ON THESE PLANS ARE BASED ON AVAILABLE RECORDS AT THE TIME OF PREPARATION AND ARE NOT GUARANTEED TO BE COMPLETE OR CORRECT. THE CONTRACTOR MUST CONTACT ALL UTILITIES AT LEAST 72 HOURS PRIOR TO CONSTRUCTION TO DETERMINE EXACT LOCATION OF ALL FACILITIES.

FOR ALL LOCAL UTILITY ONE CALL CENTERS CONTACT:



PRIVATE UTILITIES MAY BE PRESENT. CONSTRUCTION CONTRACTOR IS RESPONSIBLE FOR IDENTIFYING PRIVATE UTILITIES PRIOR TO EXCAVATION.

CONSTRUCTION CONTRACTOR IS RESPONSIBLE FOR DETERMINING AND VERIFYING THE EXACT LOCATION OF ALL UTILITIES WITHIN THE SCOPE OF WORK. COMPLETE REPAIR AND RESTORATION OF ANY AND ALL DAMAGES INCURRED SHALL BE AT THE EXPENSE OF THE CONSTRUCTION CONTRACTOR.



MIDWEST FIBER NETWORKS

414.672.5612  
6070 N FLINT RD  
GLENDALE, WI 53209

DIRECTOR OF ENGINEERING: SANDRA FALATYK

EMERGENCY NOTIFICATION NUMBER: 1-866-831-1661

PRELIMINARY

2507025  
Project# BDW GREEN ROUTE

MUNICIPALITY: AZTALAN	
COUNTY: JEFFERSON	STATE: WI
TOWN RANGE SEC: T7N R14E Sec. 19	
DATE: 10/09/2025	
DRAWN BY: IMMCO	
DRAWING SCALE: 1"=50'	

REVISIONS			
REV. NO.	DESCRIPTION	BY	DATE

012

SEE SHEET:11

18 + 00  
19 + 00  
20 + 00  
21 + 00  
22 + 00

HARVEY RD

6'  
10'  
29'  
26'  
66'  
37'



SEE SHEET:13

ATTENTION - CONSTRUCTION CONTRACTORS

- IMPORTANT NOTICE: MICRODUCT CABLES ARE MORE EASILY DAMAGED THAN STANDARD OSP CABLES. TO PREVENT DAMAGE AND DELAYS:
- DO NOT KINK, CRUSH, SHARPLY BEND, OR OVALIZE DUCT IN ANY WAY
  - DO NOT LEAVE DUCT ENDS UNSEALED AGAINST DIRT AND WATER
  - DO NOT USE DUCT THAT WON'T HOLD PRESSURE OR IS NOT COMPLETELY CLEAN
  - DO NOT STEP ON THE CABLE
  - DO NOT KINK OR SHARPLY BEND THE CABLE
  - DO NOT PULL THE CABLE USING STANDARD PULLING OPERATIONS
  - DO NOT EXCEED THE PUSH FORCE LIMITS ESTABLISHED WITH THE CRASH TEST

CONTRACTOR MUST COMPLY WITH ALL CONSTRUCTION NOTES ON PAGE 4, IN ADDITION TO THE NOTES AND DIRECTIONS ON ALL DETAIL PAGES.

CONTRACTOR TO FOLLOW INCLUDED AS-BUILT GUIDELINES, UNLESS OTHERWISE SPECIFIED IN WRITING IN THE SOW.

LOCATIONS OF UNDERGROUND STRUCTURES OR FACILITIES SHOWN ON THESE PLANS ARE BASED ON AVAILABLE RECORDS AT THE TIME OF PREPARATION AND ARE NOT GUARANTEED TO BE COMPLETE OR CORRECT. THE CONTRACTOR MUST CONTACT ALL UTILITIES AT LEAST 72 HOURS PRIOR TO CONSTRUCTION TO DETERMINE EXACT LOCATION OF ALL FACILITIES.

FOR ALL LOCAL UTILITY ONE CALL CENTERS CONTACT:



PRIVATE UTILITIES MAY BE PRESENT. CONSTRUCTION CONTRACTOR IS RESPONSIBLE FOR IDENTIFYING PRIVATE UTILITIES PRIOR TO EXCAVATION.

CONSTRUCTION CONTRACTOR IS RESPONSIBLE FOR DETERMINING AND VERIFYING THE EXACT LOCATION OF ALL UTILITIES WITHIN THE SCOPE OF WORK. COMPLETE REPAIR AND RESTORATION OF ANY AND ALL DAMAGES INCURRED SHALL BE AT THE EXPENSE OF THE CONSTRUCTION CONTRACTOR.



MIDWEST FIBER NETWORKS

414.672.5612  
6070 N FLINT RD  
GLENDALE, WI 53209

DIRECTOR OF ENGINEERING: SANDRA FALATYK

EMERGENCY NOTIFICATION NUMBER: 1-866-831-1661

PRELIMINARY

2507025  
Project# BDW GREEN ROUTE

MUNICIPALITY: AZTALAN	
COUNTY: JEFFERSON	STATE: WI
TOWN RANGE SEC: T7N R14E Sec. 19	
DATE: 10/09/2025	
DRAWN BY: IMMCO	
DRAWING SCALE: 1"=50'	

REVISIONS			
REV. NO.	DESCRIPTION	BY	DATE

013

SEE SHEET:12

PROPOSED (1) 4-WAY 22/16 MICRODUCT AND (2) 1.25" HDPE DUCTS AND (FOR MWFN) PROPOSED (1) 1.25" HDPE DUCTS WITH #8 SOLID WIRE 1206' FROM HH TO HH. MAINTAIN DEPTH OF 36 - 48". INSTALL 864CT SIROCCO MICROFIBER IN THE MICRODUCT RED CONDUIT.

PROPOSED (1) 4-WAY 22/16 MICRODUCT AND (2) 1.25" HDPE DUCTS AND (FOR MWFN) PROPOSED (1) 1.25" HDPE DUCTS WITH #8 SOLID WIRE 1363' FROM HH TO HH. MAINTAIN DEPTH OF 48 - 60". INSTALL 864CT SIROCCO MICROFIBER IN THE MICRODUCT RED CONDUIT.

PROPOSED (2) 30"X60"X36" HAND HOLE WITH PRE-DRILLED MOUSEHOLE(S) ON A 6" GRAVEL BASE. INSTALL LOCATE BRACKET. LEAVE 150' STORAGE LOOP ON THE FIBER. CAP/PLUG ALL UNUSED CONDUITS

IN THIS LOCATION USE LARGER HANDHOLE

ATTENTION - CONSTRUCTION CONTRACTORS

- IMPORTANT NOTICE: MICRODUCT CABLES ARE MORE EASILY DAMAGED THAN STANDARD OSP CABLES. TO PREVENT DAMAGE AND DELAYS:
- DO NOT KINK, CRUSH, SHARPLY BEND, OR OVALIZE DUCT IN ANY WAY
  - DO NOT LEAVE DUCT ENDS UNSEALED AGAINST DIRT AND WATER
  - DO NOT USE DUCT THAT WON'T HOLD PRESSURE OR IS NOT COMPLETELY CLEAN
  - DO NOT STEP ON THE CABLE
  - DO NOT KINK OR SHARPLY BEND THE CABLE
  - DO NOT PULL THE CABLE USING STANDARD PULLING OPERATIONS
  - DO NOT EXCEED THE PUSH FORCE LIMITS ESTABLISHED WITH THE CRASH TEST

CONTRACTOR MUST COMPLY WITH ALL CONSTRUCTION NOTES ON PAGE 4, IN ADDITION TO THE NOTES AND DIRECTIONS ON ALL DETAIL PAGES.

CONTRACTOR TO FOLLOW INCLUDED AS-BUILT GUIDELINES, UNLESS OTHERWISE SPECIFIED IN WRITING IN THE SOW.

LOCATIONS OF UNDERGROUND STRUCTURES OR FACILITIES SHOWN ON THESE PLANS ARE BASED ON AVAILABLE RECORDS AT THE TIME OF PREPARATION AND ARE NOT GUARANTEED TO BE COMPLETE OR CORRECT. THE CONTRACTOR MUST CONTACT ALL UTILITIES AT LEAST 72 HOURS PRIOR TO CONSTRUCTION TO DETERMINE EXACT LOCATION OF ALL FACILITIES.

FOR ALL LOCAL UTILITY ONE CALL CENTERS CONTACT:



PRIVATE UTILITIES MAY BE PRESENT. CONSTRUCTION CONTRACTOR IS RESPONSIBLE FOR IDENTIFYING PRIVATE UTILITIES PRIOR TO EXCAVATION.

CONSTRUCTION CONTRACTOR IS RESPONSIBLE FOR DETERMINING AND VERIFYING THE EXACT LOCATION OF ALL UTILITIES WITHIN THE SCOPE OF WORK. COMPLETE REPAIR AND RESTORATION OF ANY AND ALL DAMAGES INCURRED SHALL BE AT THE EXPENSE OF THE CONSTRUCTION CONTRACTOR.



MIDWEST FIBER NETWORKS

414.672.5612  
6070 N FLINT RD  
GLENDALE, WI 53209

DIRECTOR OF ENGINEERING: SANDRA FALATYK  
EMERGENCY NOTIFICATION NUMBER: 1-866-831-1661

PRELIMINARY

2507025  
Project# BDW GREEN ROUTE

MUNICIPALITY: AZTALAN	
COUNTY: JEFFERSON	STATE: WI
TOWN RANGE SEC: T7N R14E Sec. 20	
DATE: 10/09/2025	
DRAWN BY: IMMCO	
DRAWING SCALE: 1"=50'	

REVISIONS			
REV. NO.	DESCRIPTION	BY	DATE



014

ATTENTION - CONSTRUCTION CONTRACTORS

- IMPORTANT NOTICE: MICRODUCT CABLES ARE MORE EASILY DAMAGED THAN STANDARD OSP CABLES. TO PREVENT DAMAGE AND DELAYS:
- DO NOT KINK, CRUSH, SHARPLY BEND, OR OVALIZE DUCT IN ANY WAY
  - DO NOT LEAVE DUCT ENDS UNSEALED AGAINST DIRT AND WATER
  - DO NOT USE DUCT THAT WON'T HOLD PRESSURE OR IS NOT COMPLETELY CLEAN
  - DO NOT STEP ON THE CABLE
  - DO NOT KINK OR SHARPLY BEND THE CABLE
  - DO NOT PULL THE CABLE USING STANDARD PULLING OPERATIONS
  - DO NOT EXCEED THE PUSH FORCE LIMITS ESTABLISHED WITH THE CRASH TEST

CONTRACTOR MUST COMPLY WITH ALL CONSTRUCTION NOTES ON PAGE 4, IN ADDITION TO THE NOTES AND DIRECTIONS ON ALL DETAIL PAGES.

CONTRACTOR TO FOLLOW INCLUDED AS-BUILT GUIDELINES, UNLESS OTHERWISE SPECIFIED IN WRITING IN THE SOW.

LOCATIONS OF UNDERGROUND STRUCTURES OR FACILITIES SHOWN ON THESE PLANS ARE BASED ON AVAILABLE RECORDS AT THE TIME OF PREPARATION AND ARE NOT GUARANTEED TO BE COMPLETE OR CORRECT. THE CONTRACTOR MUST CONTACT ALL UTILITIES AT LEAST 72 HOURS PRIOR TO CONSTRUCTION TO DETERMINE EXACT LOCATION OF ALL FACILITIES.  
FOR ALL LOCAL UTILITY ONE CALL CENTERS CONTACT:



PRIVATE UTILITIES MAY BE PRESENT. CONSTRUCTION CONTRACTOR IS RESPONSIBLE FOR IDENTIFYING PRIVATE UTILITIES PRIOR TO EXCAVATION.

CONSTRUCTION CONTRACTOR IS RESPONSIBLE FOR DETERMINING AND VERIFYING THE EXACT LOCATION OF ALL UTILITIES WITHIN THE SCOPE OF WORK. COMPLETE REPAIR AND RESTORATION OF ANY AND ALL DAMAGES INCURRED SHALL BE AT THE EXPENSE OF THE CONSTRUCTION CONTRACTOR.



MIDWEST FIBER NETWORKS

414.672.5612  
6070 N FLINT RD  
GLENDALE, WI 53209

DIRECTOR OF ENGINEERING: SANDRA FALATYK  
EMERGENCY NOTIFICATION NUMBER: 1-866-831-1661

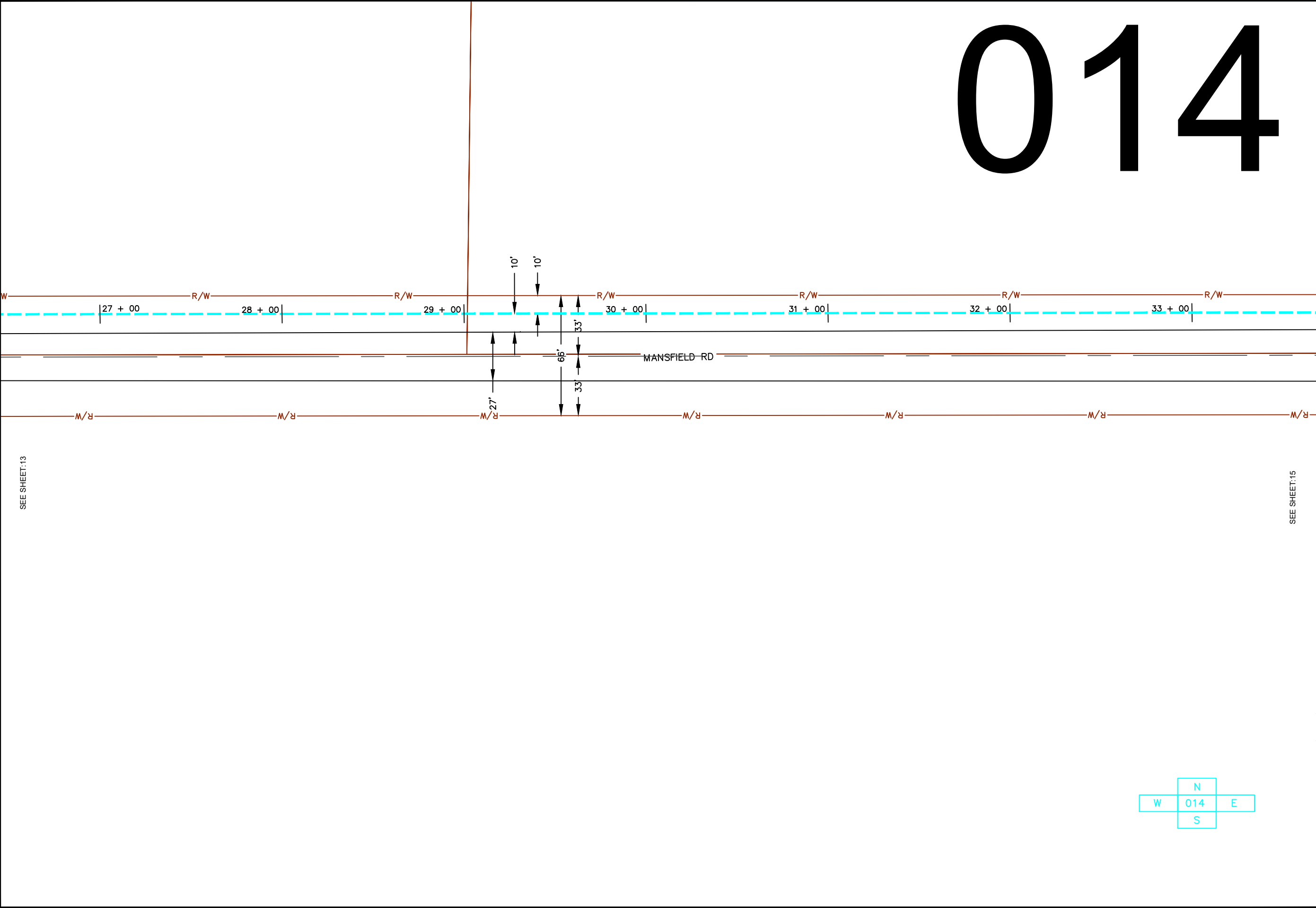
PRELIMINARY

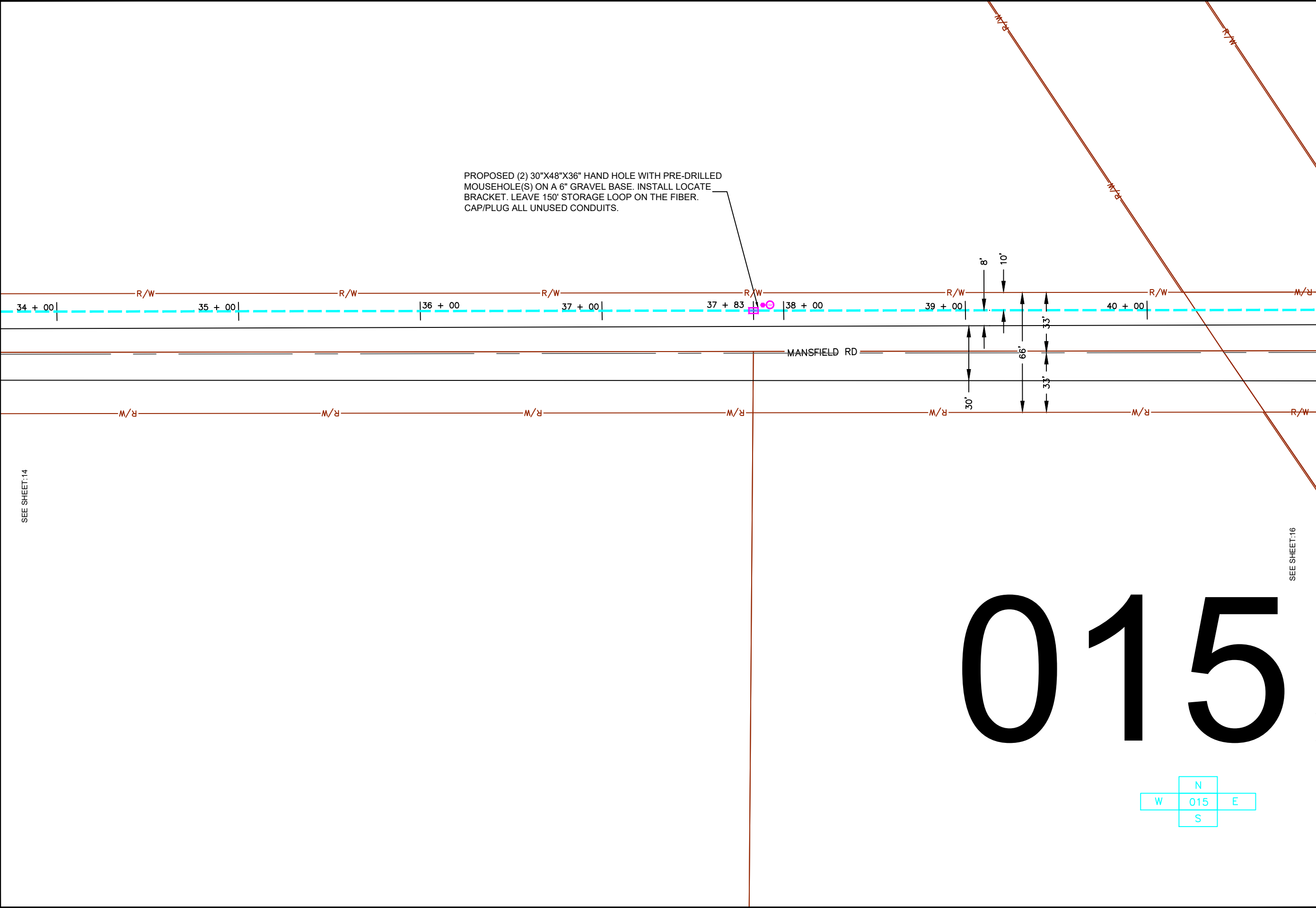
2507025

Project# BDW GREEN ROUTE

MUNICIPALITY: AZTALAN	
COUNTY: JEFFERSON	STATE: WI
TOWN RANGE SEC: T7N R14E Sec. 20	
DATE : 10/09/2025	
DRAWN BY : IMMCO	
DRAWING SCALE : 1"=50'	

REVISIONS			
REV. NO.	DESCRIPTION	BY	DATE





ATTENTION - CONSTRUCTION CONTRACTORS

- IMPORTANT NOTICE: MICRODUCT CABLES ARE MORE EASILY DAMAGED THAN STANDARD OSP CABLES. TO PREVENT DAMAGE AND DELAYS:
- DO NOT KINK, CRUSH, SHARPLY BEND, OR OVALIZE DUCT IN ANY WAY
  - DO NOT LEAVE DUCT ENDS UNSEALED AGAINST DIRT AND WATER
  - DO NOT USE DUCT THAT WON'T HOLD PRESSURE OR IS NOT COMPLETELY CLEAN
  - DO NOT STEP ON THE CABLE
  - DO NOT KINK OR SHARPLY BEND THE CABLE
  - DO NOT PULL THE CABLE USING STANDARD PULLING OPERATIONS
  - DO NOT EXCEED THE PUSH FORCE LIMITS ESTABLISHED WITH THE CRASH TEST

CONTRACTOR MUST COMPLY WITH ALL CONSTRUCTION NOTES ON PAGE 4, IN ADDITION TO THE NOTES AND DIRECTIONS ON ALL DETAIL PAGES.

CONTRACTOR TO FOLLOW INCLUDED AS-BUILT GUIDELINES, UNLESS OTHERWISE SPECIFIED IN WRITING IN THE SOW.

LOCATIONS OF UNDERGROUND STRUCTURES OR FACILITIES SHOWN ON THESE PLANS ARE BASED ON AVAILABLE RECORDS AT THE TIME OF PREPARATION AND ARE NOT GUARANTEED TO BE COMPLETE OR CORRECT. THE CONTRACTOR MUST CONTACT ALL UTILITIES AT LEAST 72 HOURS PRIOR TO CONSTRUCTION TO DETERMINE EXACT LOCATION OF ALL FACILITIES.

FOR ALL LOCAL UTILITY ONE CALL CENTERS CONTACT:



PRIVATE UTILITIES MAY BE PRESENT. CONSTRUCTION CONTRACTOR IS RESPONSIBLE FOR IDENTIFYING PRIVATE UTILITIES PRIOR TO EXCAVATION.

CONSTRUCTION CONTRACTOR IS RESPONSIBLE FOR DETERMINING AND VERIFYING THE EXACT LOCATION OF ALL UTILITIES WITHIN THE SCOPE OF WORK. COMPLETE REPAIR AND RESTORATION OF ANY AND ALL DAMAGES INCURRED SHALL BE AT THE EXPENSE OF THE CONSTRUCTION CONTRACTOR.



MIDWEST  
FIBER  
NETWORKS

414.672.5612  
6070 N FLINT RD  
GLENDALE, WI 53209

DIRECTOR OF  
ENGINEERING: SANDRA FALATYK

EMERGENCY  
NOTIFICATION  
NUMBER: 1-866-831-1661

PRELIMINARY

2507025  
Project# BDW GREEN ROUTE

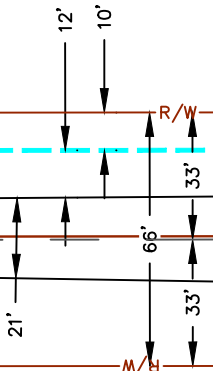
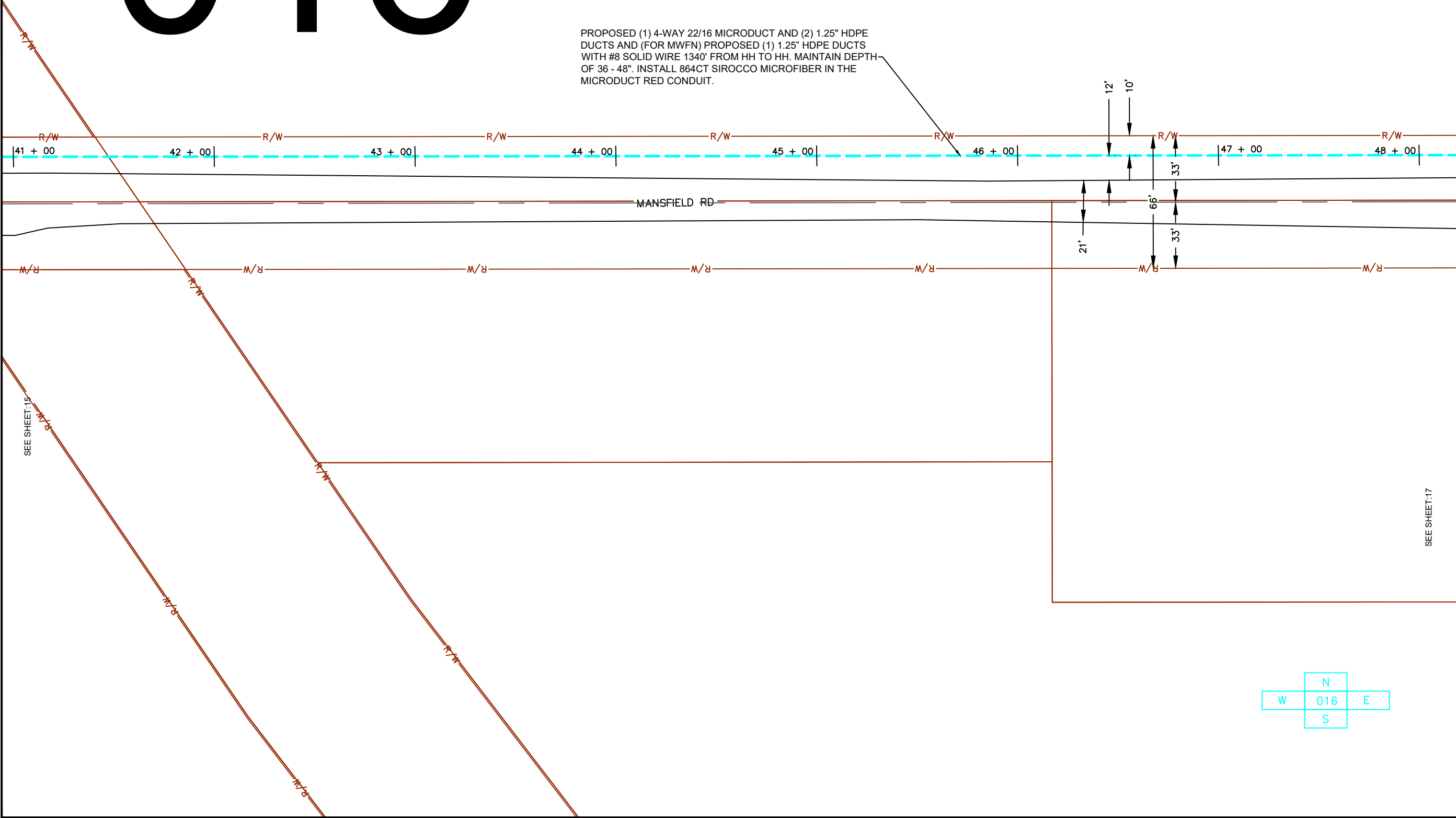
MUNICIPALITY: AZTALAN	
COUNTY: JEFFERSON	STATE: WI
TOWN RANGE SEC: T7N R14E Sec. 20	
DATE : 10/09/2025	
DRAWN BY : IMMCO	
DRAWING SCALE : 1"=50'	

REVISIONS			
REV. NO.	DESCRIPTION	BY	DATE



016

PROPOSED (1) 4-WAY 22/16 MICRODUCT AND (2) 1.25" HDPE DUCTS AND (FOR MWFN) PROPOSED (1) 1.25" HDPE DUCTS WITH #8 SOLID WIRE 1340' FROM HH TO HH. MAINTAIN DEPTH OF 36 - 48". INSTALL 864CT SIROCCO MICROFIBER IN THE MICRODUCT RED CONDUIT.



ATTENTION - CONSTRUCTION CONTRACTORS

- IMPORTANT NOTICE: MICRODUCT CABLES ARE MORE EASILY DAMAGED THAN STANDARD OSP CABLES. TO PREVENT DAMAGE AND DELAYS:
- DO NOT KINK, CRUSH, SHARPLY BEND, OR OVALIZE DUCT IN ANY WAY
  - DO NOT LEAVE DUCT ENDS UNSEALED AGAINST DIRT AND WATER
  - DO NOT USE DUCT THAT WON'T HOLD PRESSURE OR IS NOT COMPLETELY CLEAN
  - DO NOT STEP ON THE CABLE
  - DO NOT KINK OR SHARPLY BEND THE CABLE
  - DO NOT PULL THE CABLE USING STANDARD PULLING OPERATIONS
  - DO NOT EXCEED THE PUSH FORCE LIMITS ESTABLISHED WITH THE CRASH TEST

CONTRACTOR MUST COMPLY WITH ALL CONSTRUCTION NOTES ON PAGE 4, IN ADDITION TO THE NOTES AND DIRECTIONS ON ALL DETAIL PAGES.

CONTRACTOR TO FOLLOW INCLUDED AS-BUILT GUIDELINES, UNLESS OTHERWISE SPECIFIED IN WRITING IN THE SOW.

LOCATIONS OF UNDERGROUND STRUCTURES OR FACILITIES SHOWN ON THESE PLANS ARE BASED ON AVAILABLE RECORDS AT THE TIME OF PREPARATION AND ARE NOT GUARANTEED TO BE COMPLETE OR CORRECT. THE CONTRACTOR MUST CONTACT ALL UTILITIES AT LEAST 72 HOURS PRIOR TO CONSTRUCTION TO DETERMINE EXACT LOCATION OF ALL FACILITIES.

FOR ALL LOCAL UTILITY ONE CALL CENTERS CONTACT:



PRIVATE UTILITIES MAY BE PRESENT. CONSTRUCTION CONTRACTOR IS RESPONSIBLE FOR IDENTIFYING PRIVATE UTILITIES PRIOR TO EXCAVATION.

CONSTRUCTION CONTRACTOR IS RESPONSIBLE FOR DETERMINING AND VERIFYING THE EXACT LOCATION OF ALL UTILITIES WITHIN THE SCOPE OF WORK. COMPLETE REPAIR AND RESTORATION OF ANY AND ALL DAMAGES INCURRED SHALL BE AT THE EXPENSE OF THE CONSTRUCTION CONTRACTOR.



MIDWEST FIBER NETWORKS

414.672.5612  
6070 N FLINT RD  
GLENDALE, WI 53209

DIRECTOR OF ENGINEERING: SANDRA FALATYK

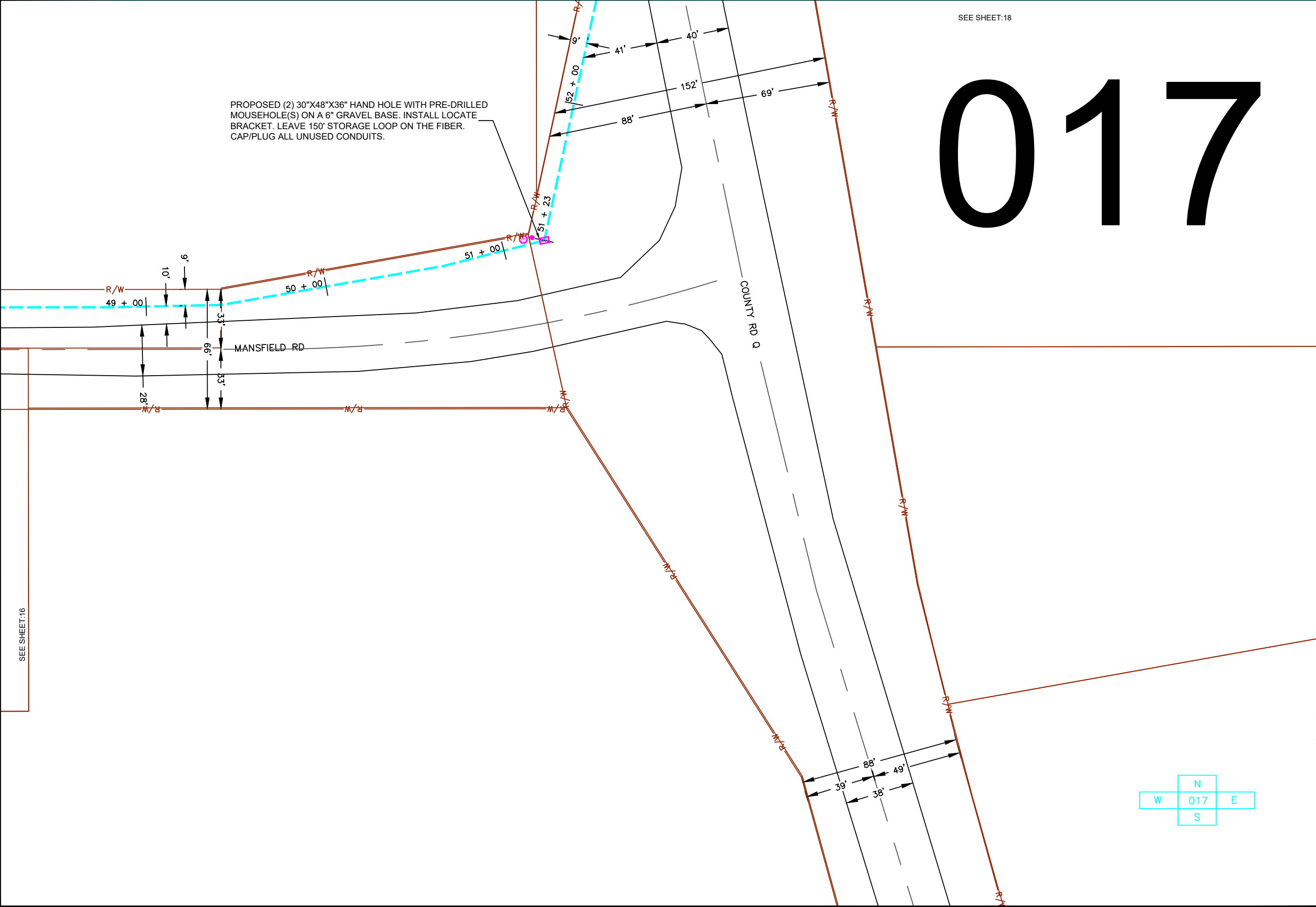
EMERGENCY NOTIFICATION NUMBER: 1-866-831-1661

PRELIMINARY

2507025  
Project# BDW GREEN ROUTE

MUNICIPALITY: AZTALAN	
COUNTY: JEFFERSON	STATE: WI
TOWN RANGE SEC: T7N R14E Sec. 20	
DATE : 10/09/2025	
DRAWN BY : IMMCO	
DRAWING SCALE : 1"=50'	

REVISIONS			
REV. NO.	DESCRIPTION	BY	DATE



SEE SHEET:18

PROPOSED (2) 30"x48"x36" HAND HOLE WITH PRE-DRILLED MOUSEHOLE(S) ON A 6" GRAVEL BASE. INSTALL LOCATE BRACKET. LEAVE 150' STORAGE LOOP ON THE FIBER. CAP/PLUG ALL UNUSED CONDUITS.

017

ATTENTION - CONSTRUCTION CONTRACTORS

- IMPORTANT NOTICE: MICRODUCT CABLES ARE MORE EASILY DAMAGED THAN STANDARD OSP CABLES. TO PREVENT DAMAGE AND DELAYS:
- DO NOT KINK, CRUSH, SHARPLY BEND, OR OVALIZE DUCT IN ANY WAY
  - DO NOT LEAVE DUCT ENDS UNSEALED AGAINST DIRT AND WATER
  - DO NOT USE DUCT THAT WON'T HOLD PRESSURE OR IS NOT COMPLETELY CLEAN
  - DO NOT STEP ON THE CABLE
  - DO NOT KINK OR SHARPLY BEND THE CABLE
  - DO NOT PULL THE CABLE USING STANDARD PULLING OPERATIONS
  - DO NOT EXCEED THE PUSH FORCE LIMITS ESTABLISHED WITH THE CRASH TEST

CONTRACTOR MUST COMPLY WITH ALL CONSTRUCTION NOTES ON PAGE 4, IN ADDITION TO THE NOTES AND DIRECTIONS ON ALL DETAIL PAGES.

CONTRACTOR TO FOLLOW INCLUDED AS-BUILT GUIDELINES, UNLESS OTHERWISE SPECIFIED IN WRITING IN THE SOW.

LOCATIONS OF UNDERGROUND STRUCTURES OR FACILITIES SHOWN ON THESE PLANS ARE BASED ON AVAILABLE RECORDS AT THE TIME OF PREPARATION AND ARE NOT GUARANTEED TO BE COMPLETE OR CORRECT. THE CONTRACTOR MUST CONTACT ALL UTILITIES AT LEAST 72 HOURS PRIOR TO CONSTRUCTION TO DETERMINE EXACT LOCATION OF ALL FACILITIES.

FOR ALL LOCAL UTILITY ONE CALL CENTERS CONTACT:



PRIVATE UTILITIES MAY BE PRESENT. CONSTRUCTION CONTRACTOR IS RESPONSIBLE FOR IDENTIFYING PRIVATE UTILITIES PRIOR TO EXCAVATION.

CONSTRUCTION CONTRACTOR IS RESPONSIBLE FOR DETERMINING AND VERIFYING THE EXACT LOCATION OF ALL UTILITIES WITHIN THE SCOPE OF WORK. COMPLETE REPAIR AND RESTORATION OF ANY AND ALL DAMAGES INCURRED SHALL BE AT THE EXPENSE OF THE CONSTRUCTION CONTRACTOR.



MIDWEST FIBER NETWORKS

414.672.5612  
6070 N FLINT RD  
GLENDALE, WI 53209

DIRECTOR OF ENGINEERING: SANDRA FALATYK  
EMERGENCY NOTIFICATION NUMBER: 1-866-831-1661

PRELIMINARY

2507025  
Project# BDW GREEN ROUTE

MUNICIPALITY: AZTALAN  
COUNTY: JEFFERSON STATE: WI  
TOWN RANGE SEC: T7N R14E Sec. 20  
DATE: 10/09/2025  
DRAWN BY: IMMCO  
DRAWING SCALE: 1"=50'

REVISIONS			
REV. NO.	DESCRIPTION	BY	DATE